



Alpha Elettronica S.r.l.

User manual

Modell:
KUPS0650
KUPS1000
KUPS1500



Introduction

Thank you for choosing this product.
Before installing this product, carefully read this manual. It includes important safety instructions for operation and correct installation of the equipment.

Warning

All appliances described in this manual must be destined only to the use for which they have been expressly designed for, Alpha Elettronica S.r.l. disclaims any liability for damage caused by improper use of the product.

Specifications

CAPACITY	650VA/390W	1000VA/600W	1500VA/900W
Input voltage	140Vac-280Vac	140Vac-300Vac	
Output voltage	200Vac~255Vac		
Output wave form	Modified sine wave		
Output frequency	50Hz - 60Hz		
Battery rating	12V/7Ahx1	12V/7Ahx2	12V/9Ahx2
Backup Time * (PC & monitor 15")	15-60min	30-80min	40-90min
Noise level	< 40dB		
Operating temperature	0~45° C		
Humidity	10 - 90%		
Dimensions	335x98x140mm	375x138x185mm	
Weight	5.5Kg	10Kg	11Kg

Alpha Elettronica S.r.l.
Strada Antolini 2/a 43044
Collecchio Parma Italia

Tel.: +39-0521-804427
Fax: +39-0521-804573
alpha@alphaelettronica.com

www.alphaelettronica.com
Imported by Alpha Elettronica S.r.l.
Made in China Pag 1



Alpha Elettronica S.r.l.

User manual

TEST THE UPS

To test UPS on battery back-up, switch off utility supply and observe 'backup Indicator' lights. Also your PC should continue to function normally.

1. Self-testing while switching on

Before turning on the UPS, the red /yellow/green led will be bright twice by turns. The buzzer keeps beeping while self-testing whereafter the UPS will be ready for operation.

2. AUTORUN

When the UPS is in operation mode, shortly press the switch twice then the yellow led will be bright, it shows the UPS is in normal AC mode, and the UPS is available for this AUTORUN function.

3. Silence Function

In Battery Mode, shortly press the switch will shut the buzzer off. But when UPS is low battery or overloaded, the buzzer can not be silenced.

4. Overload protection

When UPS is overloaded while operating, which is not solved by the user in time, it will cut off the output automatically after some time, and alarm with a long beep. After end user discharge the overload, then restart the ups.

5. Low battery shutoff

When the battery is about to be exhausted, UPS will shut down automatically to protect battery's life.

6. Switching off

1) AC Normal

If the user disabled the " FAULT " function, press the switch for 3 seconds, the UPS will be turned off.

If the user enabled the " FAULT " function, please disable it first, then press the switch for 3 seconds to turn off the UPS.

2) Backup

Press the switch for 3 seconds, the UPS will be turned off after a long beep

Push Buttons

Mains present - Operation Mode

ON/OFF push 4 secs to turn ON UPS
push 4 secs to turn OFF the UPS. Battery still in charge

Mains not present - Battery Mode

ON/OFF push 4 secs to turn ON UPS in backup mode
push 4 secs to turn OFF the UPS. Battery will not be

charged

Push 1sec (when UPS on) to able/disable acoustic alert.

When

the UPS in alarm mode can not be silenced.

Alpha Elettronica S.r.l.
Strada Antolini 2/a 43044
Collecchio Parma Italia

Tel.: +39-0521-804427
Fax: +39-0521-804573
alpha@alphaelettronica.com

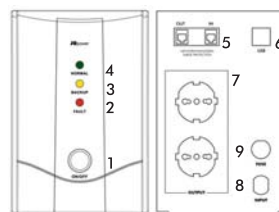
www.alphaelettronica.com
Imported by Alpha Elettronica S.r.l.
Made in China Pag 2



Alpha Elettronica S.r.l.

User manual

EXTERIOR FIGURE

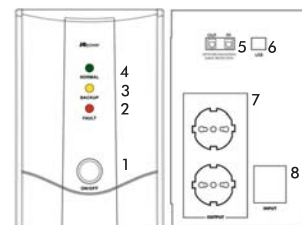


Front

- 1: On/Off switch
- 2: Fault/OverLoad Led Status
- 3: Backup Led Status
- 4: Normal/Charger Led Status

Back

- 5: RJ45 Socket
- 6: Software USB-B socket
- 7: Output Schuko sockets
- 8: Schuko plug input cable
- 9: Fuse



Front

- 1: On/Off switch
- 2: Fault/OverLoad Led Status
- 3: Backup Led Status
- 4: Normal/Charger Led Status
- 5: RJ45 Socket
- 6: Software USB-B socket
- 7: Output schuko sockets
- 8: Plug input with fuse

Alpha Elettronica S.r.l.
Strada Antolini 2/a 43044
Collecchio Parma Italia

Tel.: +39-0521-804427
Fax: +39-0521-804573
alpha@alphaelettronica.com

www.alphaelettronica.com
Imported by Alpha Elettronica S.r.l.
Made in China Pag 3



Alpha Elettronica S.r.l.

User manual

Trouble shooting

The trouble shooting chart covers most of the difficulties that you may encounter under normal working conditions. If the UPS fails to operate properly, please review the following steps before calling the service center.

1. Is the UPS plugged into a correct working outlet?
2. Is the line voltage within the rating specified?
3. Is the fuse / circuit protector on back panel open?

Please submit the following information when you call for service.

1. Model No. & Serial No.
2. Date of problem.
3. Full description of problem.

TROUBLE SHOOTING CHART

SYMPTOMS	POSSIBLE CAUSES	ACTIONS TO TAKE
UPS can not be turned ON	UPS is not connecting to AC and overloaded	Please connect to AC and reduce the load
	The input fuse is burnt	Replace the fuse, remove some load and check if the load is short-circuit or faulty
	AC Input voltage is too low	Please check the AC Input voltage
The red LED continuous bright with a beep every 8 seconds	The UPS is failure	Please send to the agency to repair
The red LED continuous bright with continuous beeping	UPS suddenly turns to battery mode in spite of utility line present	Save the data promptly and shut down the operating system
Back-up time less than specified	Back-up time less than 1 minute	Close the system and recharge again
	Overloaded	Please reduce the load
	Battery is not fully charged	Recharge the battery for at-least 12 hours and retest the backup time
	Charging unit fault	Please send to the agency to repair

*** Backup time** will vary according to device(s) usage and power settings. Damages and loss of libraries must be associated with power anomalies. Connect to the UPS only PC or Monitor. Alpha Elettronica disclaims any liability for any loss of data and damage caused by the mains.

Alpha Elettronica S.r.l.
Strada Antolini 2/a 43044
Collecchio Parma Italia

Tel.: +39-0521-804427
Fax: +39-0521-804573
alpha@alphaelettronica.com

www.alphaelettronica.com
Imported by Alpha Elettronica S.r.l.
Made in China Pag 4



This manual contains important safety instructions.
Keep this manual handy for future reference.

INSTALLATION AND OPERATION

Before installation, please read and understand the following instructions:

Inspect the following items inside box

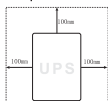
- ※ User's Manual
- ※ UPS
- ※ Mains Cord

UNPACKING AND INSPECTION

Examine the packing carton for damage. Notify your dealer immediately if damage is observed. Store the packing in a safe place for possible future trans-shipment of the UPS.

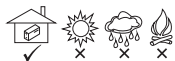
PLACE THE UPS

Position the UPS on a sturdy, dry surface in a well-ventilated area away from direct sources of heat. Leave at least 100 mm clearance all around the UPS to provide adequate ventilation.



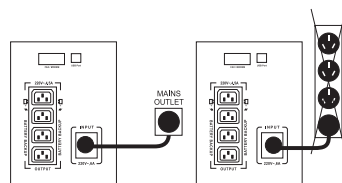
The UPS is intended for indoor use only. Although your UPS is very rugged, its internal components are not sealed from the environment. Kindly note the following.

- ※ Avoid direct sunlight.
- ※ Avoid excessive heat.
- ※ Avoid excessive humidity or liquids.
- ※ Avoid excessive dust.



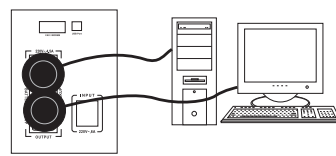
CONNECT UPS TO POWER

Connect the Power Cord, to a verified grounded 3-wire receptacle. Do not power the UPS using a surge suppressor or power strip. Switch the utility power ON.

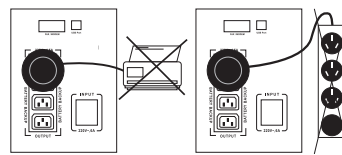


CONNECT EQUIPMENT TO UPS

Now connect your load to be protected (computer, monitor etc.) to the AC Output receptacles at the rear of the UPS.



- ※ Do not connect a Laser Printer or any non-computer peripherals to UPS outlets.
- ※ Do not connect a surge suppressor, power strip, or extension cord to the UPS outlet.



Enable the UPS by turning on the Power ON/OFF switch, which is situated on the front panel.

The UPS is now ready to use. Switch on your equipment and you are ready to function.



Safety Notice

The product contains voltages, which are potentially hazardous. Qualified service personnel should perform all repairs.

Do not try to open the cover and to service the system yourself, no user serviceable parts inside. Refer servicing to qualified service personnel only. The product has its own internal energy source (battery). The output receptacles may be live even when the product is not connected to an AC supply.

Warning

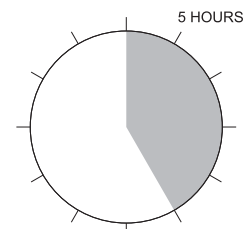
In case of fire risky, please change the fuse with the same kind and same rate.

The product is intended for indoor use only. Kindly note to avoid excessive heat, dust, humidity or liquids.

BATTERY MAINTENANCE / BATTERY CHARGING

AFTER SHIPMENT FROM THE FACTORY THE BATTERY NEEDS RECHARGING. IF NOT USED FOR A LONG PERIOD OF TIME, THE BATTERY WILL START SELF-DISCHARGING, WHICH MAY RESULT IN A SHORT SERVICE LIFE OF THE BATTERY OR MAY EVEN CAUSE DAMAGE TO IT DURING WARRANTY PERIOD. CARE SHOULD ALSO BE TAKEN TO AVOID EXCESSIVE TEMPERATURE AROUND THE UPS, WHICH COULD ALSO RESULT IN REDUCING SERVICE LIFE OF THE BATTERY. TO ACHIEVE MAXIMUM SERVICE LIFE FROM THE BATTERY THE ABOVE INSTRUCTIONS SHOULD BE FOLLOWED.

The UPS battery charges whenever the UPS is connected to utility power & is switched ON. It typically requires more than 12 hours to charge fully. Operating runtime is reduced until the battery is fully charged.



UPS Indicators and controls



ON/OFF SWITCH

Turn ON this button to supply power to the UPS outlets. To switch off power to the UPS outlets turn OFF the switch. This switch is situated on the front panel of the UPS.

● NORMAL AC NORMAL INDICATOR (Green continuous)

The UPS is supplying conditioned utility power to its outlets.

● BACKUP ● BACKUP INDICATOR (Yellow led continuous bright)

The yellow indicator continuous bright and a one second duration tone is sounded two seconds after utility power loss has occurred. The battery is powering the UPS outlets. The expected runtime for a typical personal computer (PC) is about 15 to 20 minutes.

● FAULT ● LOW BATTERY INDICATOR (Red led continuous bright)

The buzzer beeps fast whenever the battery is near the end of its runtime. Promptly save your data and exit all applications and shutdown the operating system.

● NORMAL ● FAULT OVERLOAD INDICATOR

The red LED flashes, with continuous beeping. UPS protects itself at this time. Please move some load.